



V12 VANQUISH MANUAL CONVERSION



PERFECTING A LEGEND



Hand-built at Newport Pagnell, utilising advanced materials and cutting-edge construction techniques, the V12 Vanquish redefined what an Aston Martin could be. It represented a huge leap forward from the V8-powered cars of the 80s and 90s, yet the V12 Vanquish retained the traditional 'brute-in-a-suit' characteristics that made Aston's grand-tourers the best in the world. The V12 Vanquish story is quintessentially Aston Martin. Exceptionally fast, exceedingly beautiful

and the star of a James Bond film, the V12 Vanquish echoed the successes of the DB5 and V8 that preceded it. The first three years of V12 Vanquish production sold out mere months after the model's launch, such was the adoration it generated.

25 years on from the launch of the V12 Vanquish, Aston Workshop have developed the first independently available 6-speed manual conversion for this iconic model.



COMPLETE CONTROL

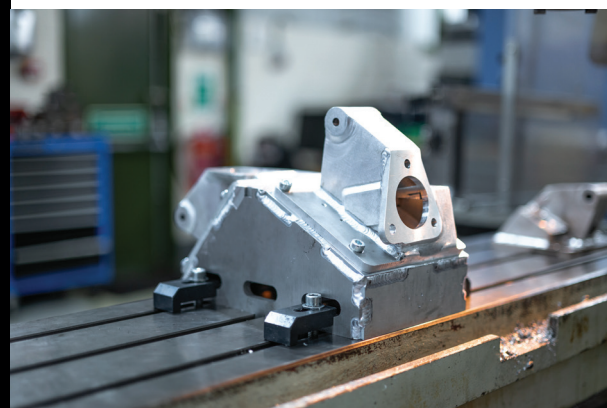
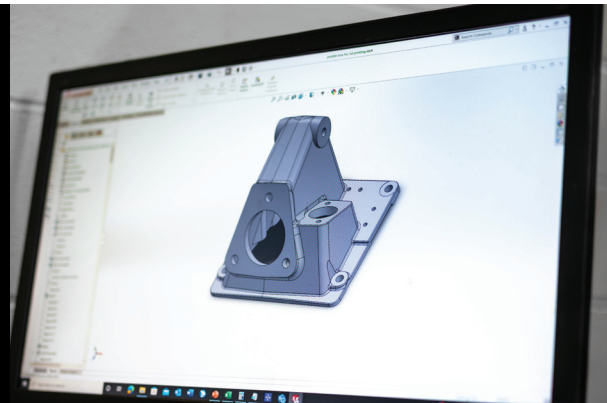
The incredible performance generated by the 5.9L, 460bhp V12 engine (power rose to 520bhp in the V12 Vanquish S) has always been restrained by the limitations of the ASM/SSM automated-manual transmission. After an extensive research and development campaign Aston Workshop are now giving you, the driver, complete control over this incredible super-Grand Tourer. Three pedals, and one incredible car to drive.

Utilising the original six-speed gearbox, stripped of its automated systems and modified to become a true manual, our manual conversion process makes the V12 Vanquish the car it was always meant to be. Removing the clunky ASM/SSM components unleashes the full performance of that iconic Aston Martin V12 engine, while also making the V12 Vanquish a more engaging and driver-friendly car to enjoy.

A super-GT in every sense, the V12 Vanquish has finally become what it was always destined to be; a true driver's Aston Martin.

METICULOUSLY ENGINEERED

The V12 Vanquish was developed using cutting-edge engineering techniques, which is exactly how we developed our manual conversion. Challenges such as tight pedal spacing and awkward gear-lever placement have been overcome by the use of modern engineering principles. By starting from scratch, tackling each problem afresh, we've engineered-out these otherwise frustrating issues. What's left is a conversion process that matches OEM standards, both for form and function, that feels like it's how the car should always have been.



ORIGINALITY PRESERVED

As with all Aston Workshop upgrades, originality and reversibility have remained at the forefront of the development process. Our conversion utilises the car's original transmission, subtly modified to give a positive, gated feel to the gear lever. All modifications, such as a new clutch system, custom pedal box, and bespoke interior components, are carried out with respect to the historical importance Aston Martins have.

BUILT BESPOKE



Each Aston Martin is a unique and very special thing, and our manual conversion procedure allows for even more bespoke customisation. As standard we use V8 Vantage pedals and DBS-style gear knob, but manual Vanquish owners are invited to select their own touch-points if they so desire.

The redundant gear selector buttons at the top of the dash can be repurposed, or entirely removed, dependent on owner specification.

Some previous bespoke requests we have carried out include labelling the buttons in line with the 'Die Another Day' gadgets, and replacing the buttons entirely to make space for additional gauges.

Ultimately, with countless options available, the manual conversion process is the ideal time to make additional changes to personalise your V12 Vanquish.

FREQUENTLY ASKED QUESTIONS

What physical changes will you make to my V12 Vanquish?

Everything in our V12 Vanquish manual conversion process is fully reversible. A small hole for the gear lever to go through is the only material change made to the chassis; everything else is a modification to an existing part, or a new part we have manufactured to replace an existing one.

What about the pedal spacing, and the location of the gear knob in relation to the dashboard?

Despite the small footwell dimensions our extensive R&D program has led to a pedal spacing that feels entirely natural; if desired, we can also manufacture a bespoke pedal set up for an owner individually. Regarding the gear knob positioning, our conversion process moves the lever further backwards to avoid the dash interfering with gear changes.

Will I lose any functionality within the car?

Apart from items relating to the automated-manual transmission, all other functionality is retained. The gear indicator and SPORT button are both removed as they were connected to the original ASM control unit. We blank the flappy-paddle gaps off rather than remove them completely, for the sake of the conversion being fully reversible.

Do you offer this conversion for Left Hand Drive cars?

Yes. We have previously converted both Right and Left-Hand Drive cars.

Do you offer this conversion for all variants of the V12 Vanquish?

Despite the changes the V12 Vanquish saw throughout its production run, our conversion is applicable to all model years as well as 'S' cars.

How long will the conversion process take?

We aim to complete the conversion, including a full testing program, within four weeks of the car arriving at Aston Workshop.

Is this conversion available anywhere else?

Currently, the only way to benefit from an Aston Workshop V12 Vanquish manual conversion is by bringing your car to us. We have a number of transport options for owners around the UK, Europe and further afield.

How much will it cost to convert my V12 Vanquish to manual?

Our V12 Vanquish manual conversion is available for £19,995, plus taxes and shipping where applicable.

Additional costs may apply if any underlying mechanical issues are discovered.



To enquire about the Aston Workshop
V12 Vanquish Manual Conversion please
call us or email us for a quotation.

Telephone +44 (0) 1207 233525
Email workshop@aston.co.uk
www.aston.co.uk

Red Row, Beamish, Co. Durham, DH9 0RW